



C O B E L P A

# MONTHLY STATISTICAL DATA 2011

**JULY 2011**

\* = estimated figure

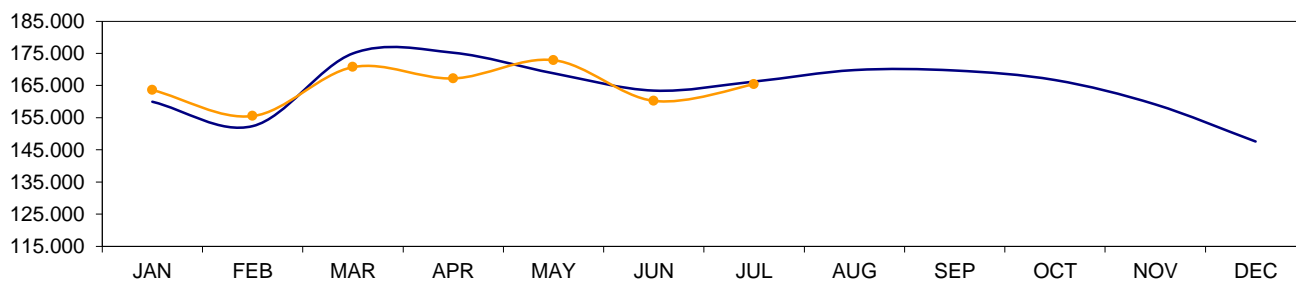
in tons

PRODUCTION	CURRENT	Cumul 2011	Cumul 2010
	MONTH	7 months	7 months
<b>TOTAL PULP (market + integrated)</b>	<b>42.345</b>	<b>300.546</b>	<b>301.778</b>
Woodfree paper	40.637	269.841	271.995
Woodcontaining paper * (* incl. Newsprint)	79.610	572.196	571.733
Paper & board for packaging	36.541	254.763	251.710
Other paper & board (1)	8.614	58.826	65.610
<b>TOTAL PAPER &amp; BOARD</b>	<b>165.402</b>	<b>1.155.626</b>	<b>1.161.048</b>

(1) Sanitary grades + technical paper & board + speciality paper

## PAPER & BOARD PRODUCTION GRAPH 2010/2011

2010 2011



## PULP PRODUCTION GRAPH 2010/2011

2010 2011

