



C O B E L P A

MONTHLY STATISTICAL DATA 2011

AUGUST 2011

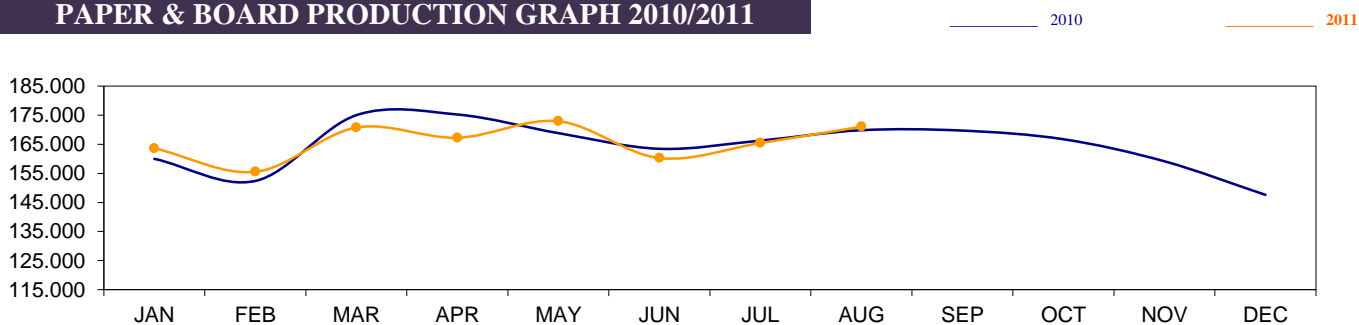
* = estimated figure

in tons

PRODUCTION	CURRENT	Cumul 2011	Cumul 2010
	MONTH	8 months	8 months
TOTAL PULP (market + integrated)	43.166	343.713	343.092
Woodfree paper	39.632	309.472	313.764
Woodcontaining paper * (* incl. Newsprint)	86.719	658.916	659.429
Paper & board for packaging	35.767	290.530	283.417
Other paper & board (1)	8.916	67.742	74.257
TOTAL PAPER & BOARD	171.034	1.326.660	1.330.867

(1) Sanitary grades + technical paper & board + speciality paper

PAPER & BOARD PRODUCTION GRAPH 2010/2011



PULP PRODUCTION GRAPH 2010/2011

