

MONTHLY STATISTICAL DATA 2011



DECEMBER 2011

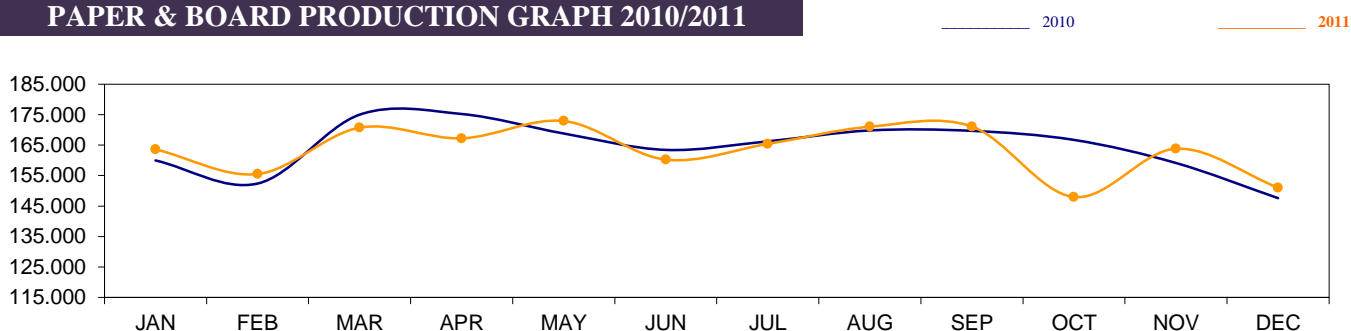
* = estimated figure

in tons

PRODUCTION	CURRENT	Cumul 2011	Cumul 2010
	MONTH	12 months	12 months
TOTAL PULP (market + integrated)	39.893	503.352	498.388
Woodfree paper	33.991	441.274	467.474
Woodcontaining paper * (* incl. Newsprint)	77.010	985.936	990.133
Paper & board for packaging	32.669	431.098	408.083
Other paper & board (1)	7.387	102.293	108.309
TOTAL PAPER & BOARD	151.057	1.960.601	1.973.999

(1) Sanitary grades + technical paper & board + speciality paper

PAPER & BOARD PRODUCTION GRAPH 2010/2011



PULP PRODUCTION GRAPH 2010/2011

